

Netherby-1 DW1 LWD RM 500TVD

ARC8A-AA

id13_0c_02

MWD_10

id13_0c_02

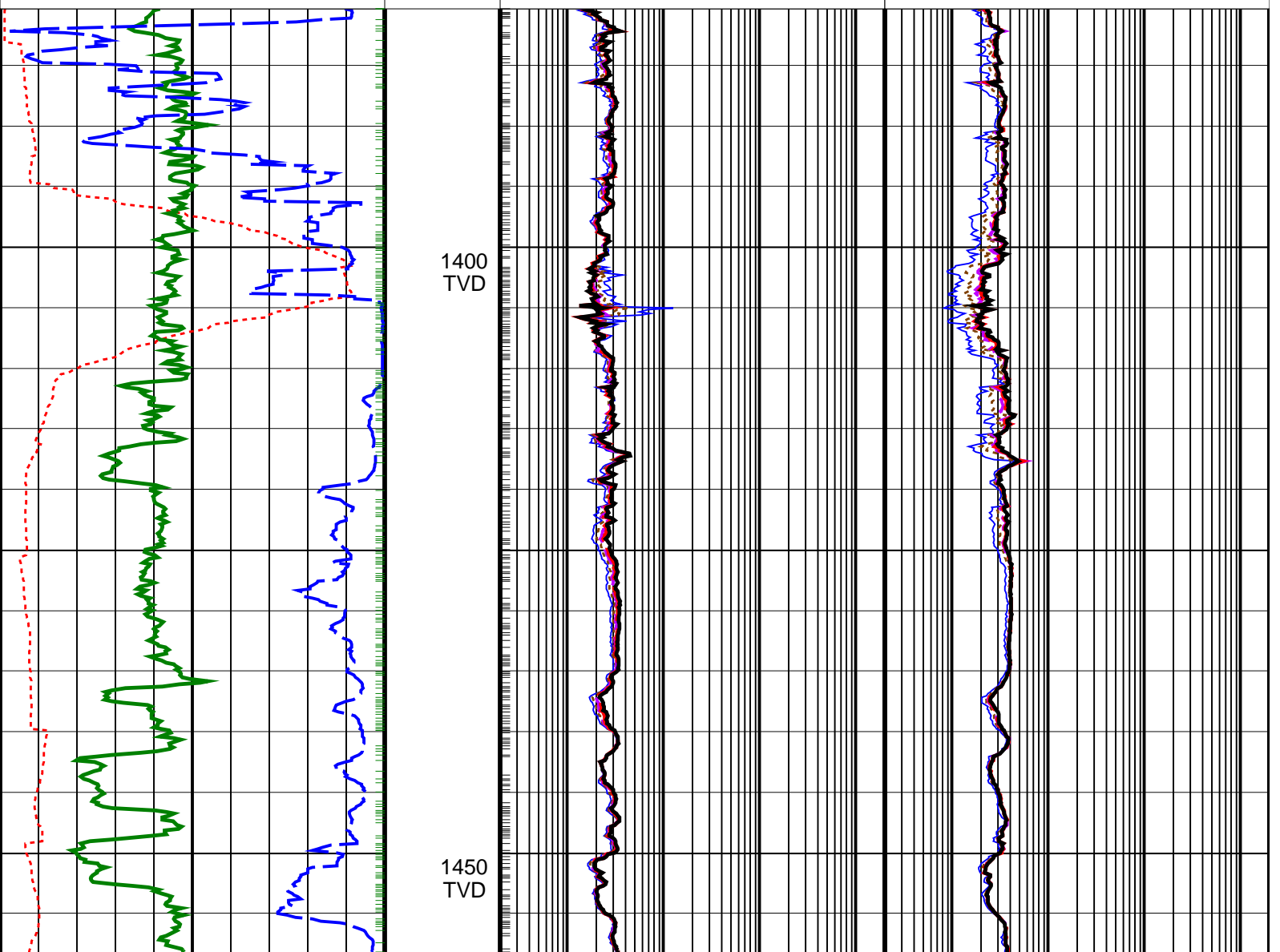
Format: VISION Resistivity 2MHz 1:500 Vertical Scale: 1:500 Graphics File Created: 06-Aug-2008 07:00

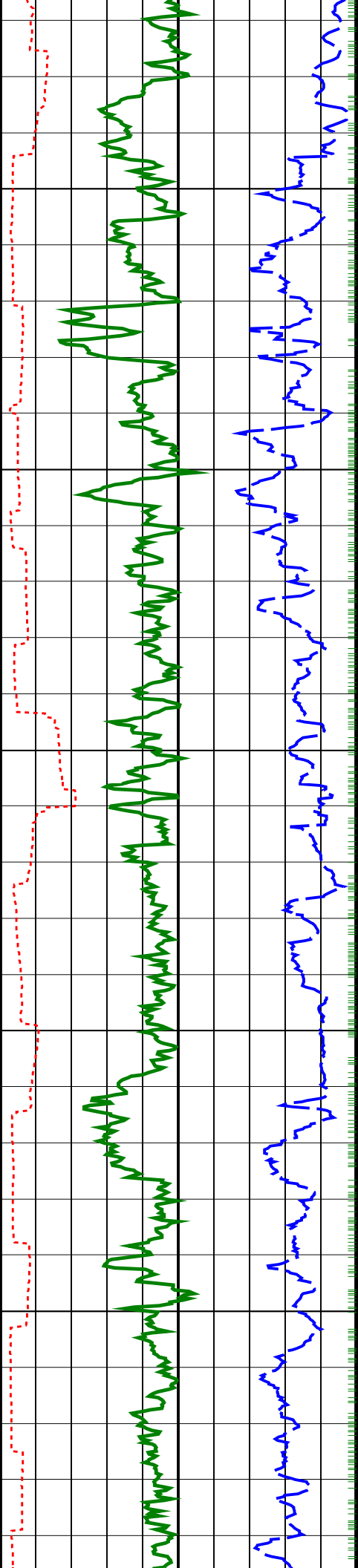
PIP SUMMARY

- ┆ ARC Gamma Ray Samples
- ┆ ARC Resistivity Samples

	ARC Phase-Shift Resistivity 40-in. at 2 MHz (P40H)	ARC Attenuation Resistivity 40-in. at 2 MHz (A40H)
	0.2 (OHMM) 2000	0.2 (OHMM) 2000
	ARC Phase-Shift Resistivity 34-in. at 2 MHz (P34H)	ARC Attenuation Resistivity 34-in. at 2 MHz (A34H)
	0.2 (OHMM) 2000	0.2 (OHMM) 2000
	ARC Phase-Shift Resistivity 28-in. at 2 MHz (P28H)	ARC Attenuation Resistivity 28-in. at 2 MHz (A28H)
	0.2 (OHMM) 2000	0.2 (OHMM) 2000
	ARC Phase-Shift Resistivity 22-in. at 2 MHz (P22H)	ARC Attenuation Resistivity 22-in. at 2 MHz (A22H)
	0.2 (OHMM) 2000	0.2 (OHMM) 2000
	ARC Phase-Shift Resistivity 16-in. at 2 MHz (P16H)	ARC Attenuation Resistivity 16-in. at 2 MHz (A16H)
	0.2 (OHMM) 2000	0.2 (OHMM) 2000

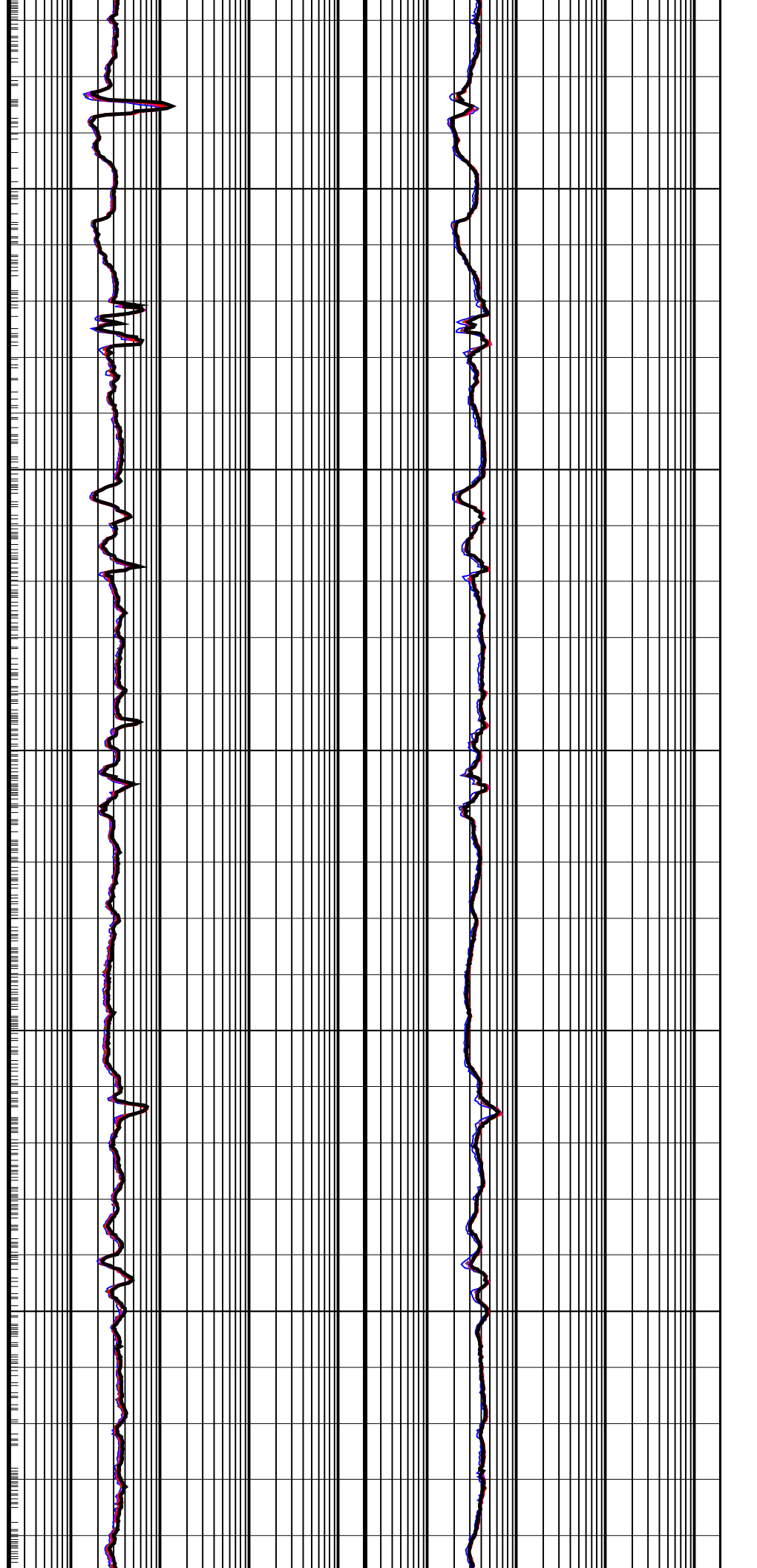
Rate of Penetration, Averaged over Last 5ft (ROP5_RM)
200 (M/HR) 0
ARC Resistivity Time After Bit (TAB_ARC_RES)
0 (HR) 10
ARC Gamma Ray (GR_ARC)
0 (GAPI) 200

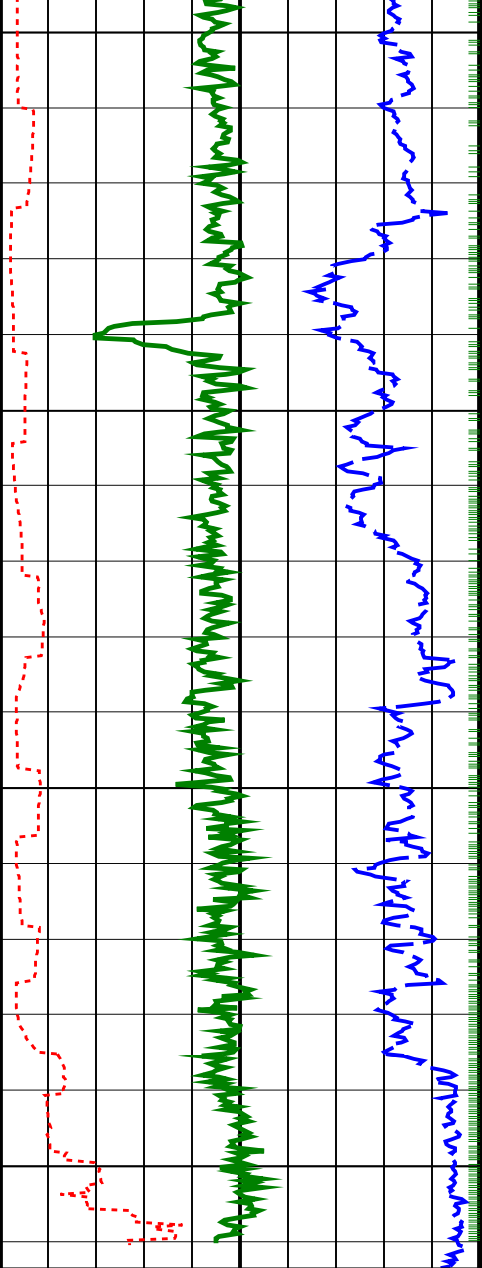




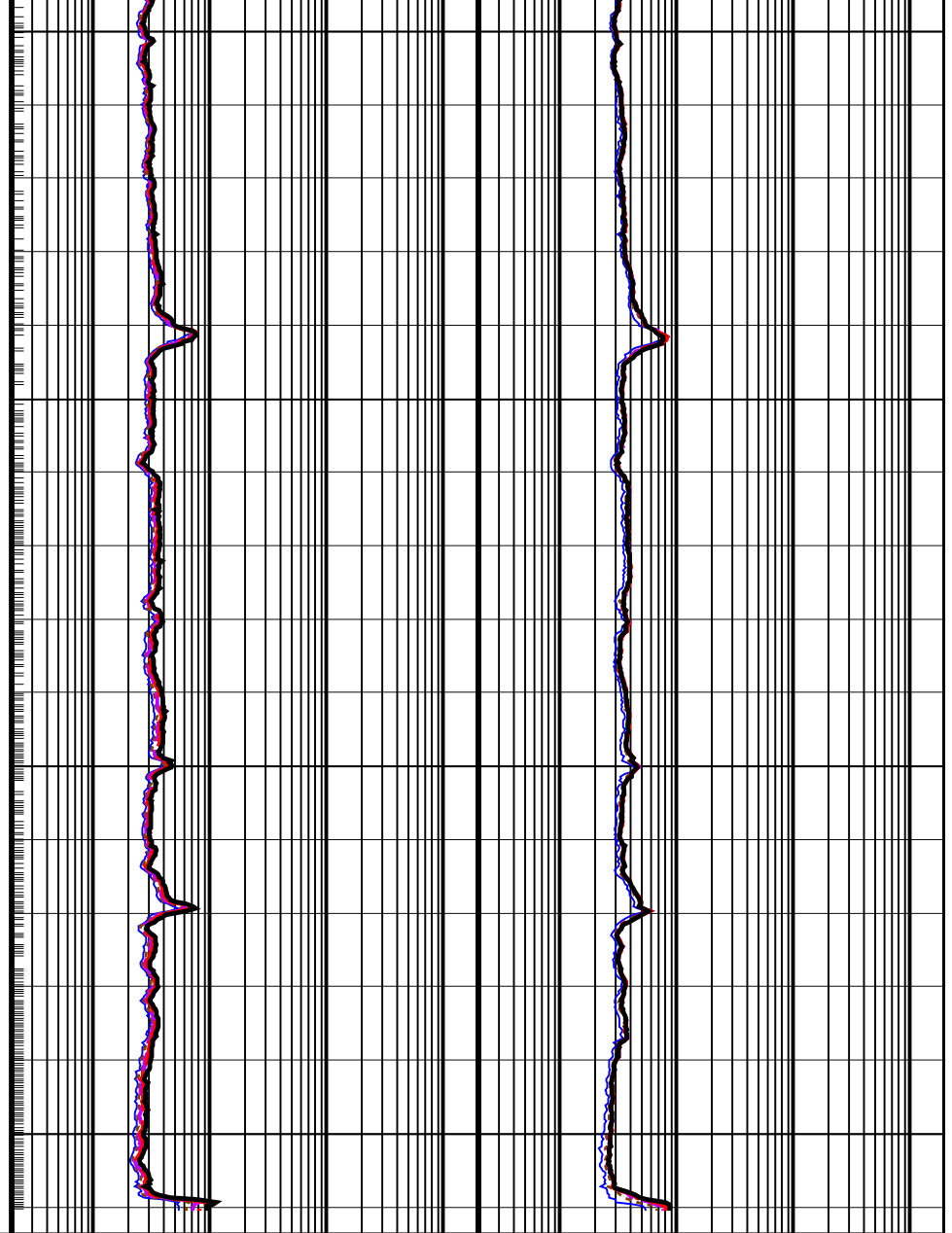
1500
TVD

1550
TVD





1600 TVD
1650 TVD



ARC Gamma Ray (GR_ARC)		
0	(GAPI)	200
ARC Resistivity Time After Bit (TAB_ARC_RES)		
0	(HR)	10
Rate of Penetration, Averaged over Last 5ft (ROP5_RM)		
200	(M/HR)	0

ARC Phase-Shift Resistivity 16-in. at 2 MHz (P16H)	ARC Attenuation Resistivity 16-in. at 2 MHz (A16H)
0.2 (OHMM) 2000	0.2 (OHMM) 2000
ARC Phase-Shift Resistivity 22-in. at 2 MHz (P22H)	ARC Attenuation Resistivity 22-in. at 2 MHz (A22H)
0.2 (OHMM) 2000	0.2 (OHMM) 2000
ARC Phase-Shift Resistivity 28-in. at 2 MHz (P28H)	ARC Attenuation Resistivity 28-in. at 2 MHz (A28H)
0.2 (OHMM) 2000	0.2 (OHMM) 2000
ARC Phase-Shift Resistivity 34-in. at 2 MHz (P34H)	ARC Attenuation Resistivity 34-in. at 2 MHz (A34H)
0.2 (OHMM) 2000	0.2 (OHMM) 2000
ARC Phase-Shift Resistivity 40-in. at 2 MHz (P40H)	ARC Attenuation Resistivity 40-in. at 2 MHz (A40H)
0.2 (OHMM) 2000	0.2 (OHMM) 2000

PIP SUMMARY

- + ARC Gamma Ray Samples
- + ARC Resistivity Samples

IDEAL Version: ID13_OC_08

IDF

